





## COMPANY

---

OVERVIEW	1
STOCK BLANK APPAREL	3
CUSTOM MANUFACTURING	5

## COLLECTIONS

---

INDEPENDENT	7
AFX	23
EXPEDITION	35
STANDARD SUPPLY	61
PREMIUM	83
JERSEY	113
YOUTH	117


## INFORMATION

---

STYLE INDEX	129
SWATCHES / PANTONES	131
LOCATIONS / CONTACT	135
DISTRIBUTORS	136



 @independenttradingcompany

 /IndependentTradingCompany

 @indytradingco

 Independent Trading Company





### Quality Sweatshirts...It's Our Mission.

Leading manufacturer and supplier of high quality blank & custom apparel since 1987.

Building on our roots in the action sports industry since 1987, Independent Trading Company is established as a leading manufacturer and supplier of high quality Custom & Blank apparel for Screen Printers and Brands all over the world. Our collection of blanks, ranging from Sweatshirts to Performance Fleece, Jackets, and Fleece Bottoms is readily available in over 60 styles with a wide range of colors. All styles are produced in high quality fabrics for supreme results when printing or embellishing. We

provide extensive at-once inventory in two locations, California & Pennsylvania, as well as distributors throughout the USA. In addition to domestic distributors, we also have distributors in Canada, Australia, Chile, Germany, Japan, The UK, Brazil, and Mexico. It's our mission to supply the best quality products for our customers and develop long lasting relationships. Many of our best customers are our first customers.



“ We make quality apparel that brands feel confident putting their label on. ”

## WHY CHOOSE INDEPENDENT?



It's simple...We make quality apparel that brands feel confident putting their label on.

- Quality Products
- Large Inventory
- No Minimum Order Requirements
- Custom Apparel Manufacturing
- Ready To Ship Within 24hrs
- Warehouses on West & East Coast

At Independent Trading Company we strive to maintain a higher level of quality in all our products by paying special attention to details at every stage of production. We monitor materials and garment assembly processes all the way through to the finished product.

**"Quality is in the details."**

The finishing touches we put into each design is what makes the difference! We don't need to make 100% cotton draw cords, double fleece lined hoods, or durable zippers, but we do and the result is a wide range of styles that are unique and dependable!

# STOCK BLANK APPAREL

A trusted supplier of quality blank apparel to thousands of top clothing brands.

Independent Trading Company keeps large reserves of blank sweatshirts, jackets, fleece bottoms, and more in stock so you can order what you need when you need it. Our customers' orders ship as soon as possible so they can be printed or embellished in a matter of days and placed at retail quickly. We are a trusted supplier to thousands of top clothing brands in the action sports and lifestyle apparel industry.

**NO MINIMUMS ON STOCK ORDERS**

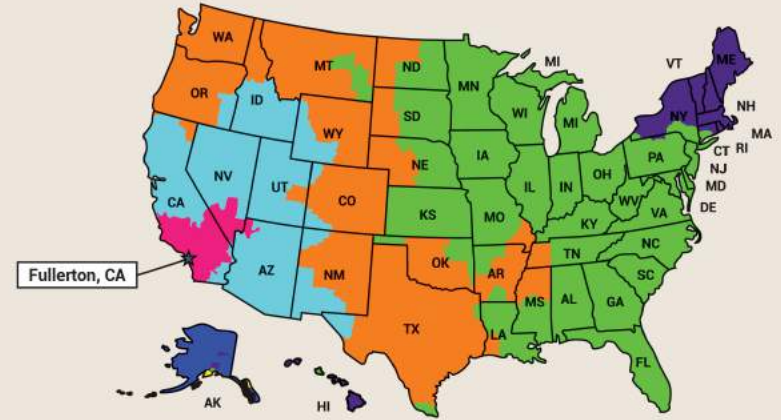
Create your wholesale account and order online.  
[b2b.independenttradingco.com](http://b2b.independenttradingco.com)



## STOCK BLANK COLLECTION CATEGORIES



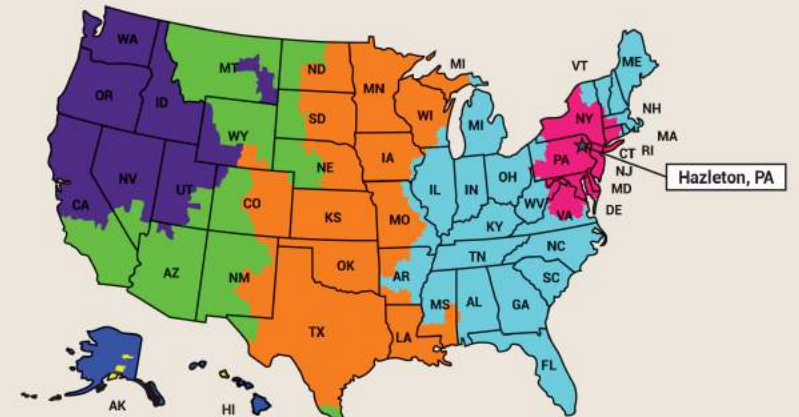
## INDEPENDENT TRADING WEST COAST TRANSIT TIMES



If picked up on...	Will be delivered by...						
	1 Day	2 Days	3 Days	4 Days	5 Days	6 Days	7+ Days
Monday	Tue	Wed	Thu	Fri	Mon	Tue	Wed
Tuesday	Wed	Thu	Fri	Mon	Tue	Wed	Thu
Wednesday	Thu	Fri	Mon	Tue	Wed	Thu	Fri
Thursday	Fri	Mon	Tue	Wed	Thu	Fri	Mon
Friday	Mon	Tue	Wed	Thu	Fri	Mon	Tue
Saturday	Tue	Wed	Thu	Fri	Mon	Tue	Wed
Sunday	Tue	Wed	Thu	Fri	Mon	Tue	Wed

The Service Maps and charts are a general representations of transit. For more accurate transit quotes visit Shipping Rates and Delivery Times on fedex.com

## INDEPENDENT TRADING EAST COAST TRANSIT TIMES







# CUSTOM MANUFACTURING

Can't find it in our stock line? Let's make it custom.

## Minimum Order Quantity (MOQ)

600pcs per color & 1,200pcs per style.

## Lead Times

After pre-production approval, typical lead times are 90-100 days to exit China.

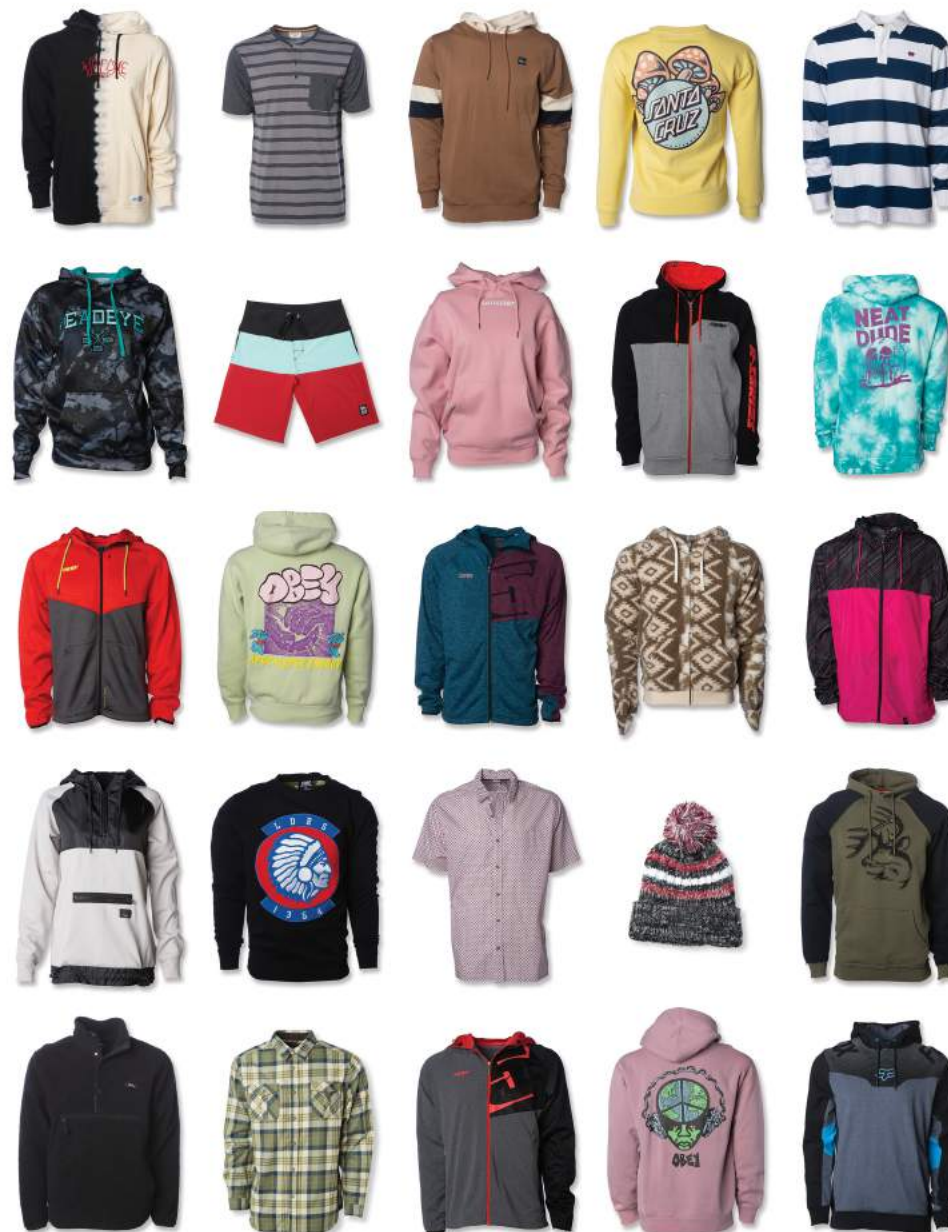
## Low Shipping Costs + Import Management

We import containers weekly so you benefit from our full container shipping rates saving you dollars per garment. No need to hire an import department. Our team handles the shipping process from the factory to your door.

- Design & Development
- Pattern Making
- Knitting
- Dyeing

- Cutting
- Embellishing
- Sewing
- Quality Control

- Packaging
- Import & Shipping
- Receiving
- Delivery



We have the infrastructure and expertise to manufacture anything you design. We guarantee high quality and consistent manufacturing, on time delivery, and prices that can't be beat.

**Contact us to request a meeting**

info@independenttradingco.com • Toll Free: 877.366.9911 • Local: 949.366.9911

**INDEPENDENT**  
COLLECTION

Benchmark in style, quality & fit.





# IND5000P

## Men's Premium 450gm Heavyweight Cross-Grain Hoodie

XS-3XL | Standard Fit | Heavyweight | 450 gm (13.5 oz)



13.5oz (450gm) 3-end fleece • ring spun cotton • 100% cotton face yarns on solid colors • 20 singles face yarn • double fleece lined hood • antique silver eyelets • heavy duty 100% cotton shoestring drawcord w/ antique silver tips • double ribbing side panels • reverse coverstitch sewing on all seams • body and hood panels sewn Cross-Grain • 520gm 100% cotton 1x1 ribbing at cuff and waistband • tear away woven neck label



Black

Charcoal Heather

Grey Heather

White

Classic Navy

Maroon

Alpine Green



Olive

Dusty Pink

Bone

Red

Royal

Gold

# Legend

450gm HEAVYWEIGHT



Body & Hood Panels Sewn Cross-Grain

Double Fleece Lined Hood

Antique Silver Eyelets

450gm/13.5oz. Fleece

Heavy Duty Shoelace Drawcords

Antique Silver Drawcord Tips

Cross-Grain Body Panels

Double Layer 1x1 520gm  
100% Cotton Ribbing Side Panels

Reverse Coverstitch On All Seams

1x1 520gm 100% Cotton Ribbing





# IND5000C

## Men's Premium 450gm Heavyweight Cross-Grain Crew

XS-3XL | Standard Fit | Heavyweight | 450 gm (13.5 oz)



13.5oz (450gm) 3-end fleece • ring spun cotton • 100% cotton  
face yarns on solid colors • 20 singles face yarn • double  
ribbing side panels • reverse coverstitch sewing on all seams  
• body panels sewn Cross-Grain • 520gm 100% cotton 1x1  
ribbing at cuff and waistband • tear away woven neck label



Black Charcoal Heather Grey Heather White Classic Navy Maroon Alpine Green



Olive Dusty Pink Bone Red Royal Gold



Body & Hood Panels Sewn Cross-Grain

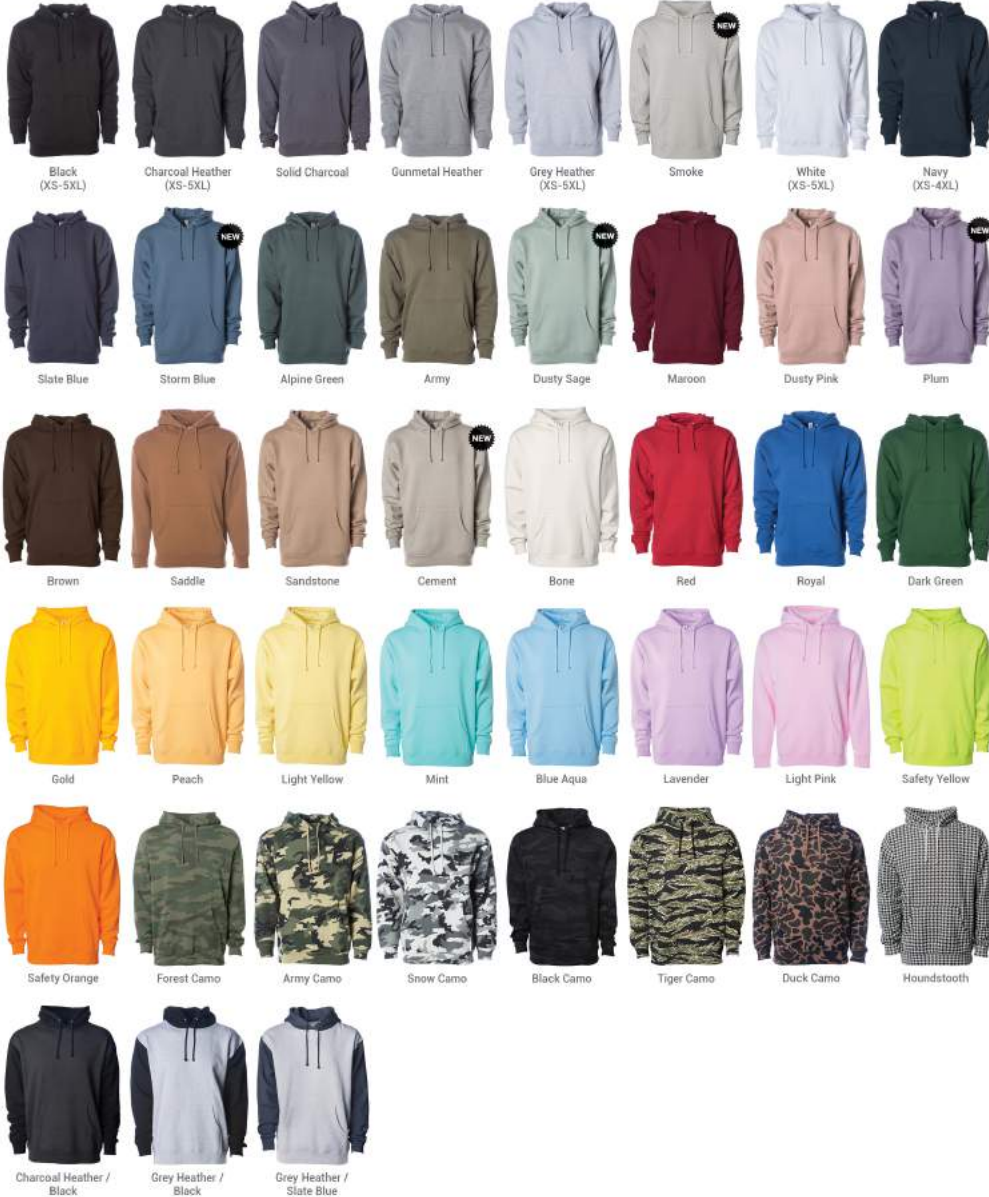


# IND4000 Men's Heavyweight Hooded Pullover

XS-3XL (4XL & 5XL available in select colors) | Generous Fit | Heavyweight | 330 gm (10 oz)



10oz. (330gm) cotton/polyester blend fleece • Solid Colors: 70% Cotton/30% Polyester with 100% cotton 32 singles face yarn for supreme printability and softness • Heather Colors: 52% cotton/48% polyester • Camo Colors: 75% cotton/25% polyester with 100% cotton 32 singles face yarn • Safety Colors: 52% cotton/48% polyester • fleece lined hood • split stitch double needle sewing on all seams • twill neck tape • 1x1 ribbing at cuffs and waistband • nickel eyelets • generous fit





# IND4000Z

## Men's Heavyweight Zip Hood

XS-3XL (4XL & 5XL available in select colors) | Generous Fit | Heavyweight | 330 gm (10 oz)



10oz (330gm) cotton/polyester blend fleece • Solid Colors: 70% cotton/30% polyester with 100% Cotton 32 singles face yarn for supreme printability and softness • Heather Colors: 52% cotton/48% polyester • Camo Colors: 75% cotton/25% polyester with 100% cotton 32 singles face yarn • fleece lined hood • split stitch double needle sewing on all seams • twill neck tape • 1x1 ribbing at cuffs and waistband • nickel eyelets • #5 nickel kissing zipper • generous fit



Black (XS-6XL) Charcoal Heather Solid Charcoal Gunmetal Heather Grey Heather (XS-6XL) Navy (XS-6XL)



Maroon (XS-2XL) Army Sandstone Red Royal Forest Camo





# IND20PNT | Men's Midweight Fleece Pant

XS-2XL | Relaxed Fit | Midweight | 280 gm (8.5 oz)



8.5oz. (280gm) cotton/polyester blend fleece • ring spun cotton • elastic waistband with shoestring drawcord • 1x1 ribbing at ankle cuffs • sewn eyelets • sewn fly detail • back pocket • jersey lined hand pockets • relaxed fit.



Black Grey Heather White Classic Navy Royal Red Army



Sandstone Light Yellow Mint Light Pink Lavender Forest Camo Black Camo



# Men's Midweight Fleece Short | IND20SRT

XS-2XL | Relaxed Fit | Midweight | 280 gm (8.5 oz)

8.5oz. (280gm) cotton/polyester blend fleece • ring spun cotton • elastic waistband with shoestring drawcord • sewn eyelets • sewn fly detail • back pocket • jersey lined hand pockets • relaxed fit • tapered knee opening



Black Grey Heather White Classic Navy Royal Red Army



Sandstone Light Yellow Mint Light Pink Lavender Forest Camo Black Camo



# IND40RP Men's Lightweight Raglan Hooded Pullover

XS-3XL | Slim Fit | Lightweight | 230 gm (7 oz)



7oz (230gm) cotton/polyester blend fleece • raglan sleeves • jersey lined hood • split stitch double needle sewing • twill neck tape • 1x1 ribbing at cuffs and waistband • nickel eyelets • slim fit

Screen Printers Please Note: This fabric is not made of 100% cotton face yarn.



Gunmetal Heather/Black

Gunmetal Heather/Charcoal Heather

Gunmetal Heather/Classic Navy Heather

Gunmetal Heather/Burgundy Heather

Gunmetal Heather/Army Heather



Charcoal Heather/Black

Charcoal Heather/Burgundy Heather

Charcoal Heather/Army Heather



# Unisex Heavyweight Varsity Zip Hood IND45UVZ

XS-3XL | Slim Unisex Fit | Heavyweight | 330 gm (10 oz)

10oz (330gm) cotton/polyester blend fleece • 30 singles cotton/polyester blend face yarn • fleece lined hood • split stitch double needle sewing on all seams • twill neck tape • 1x1 jacquard ribbing at cuffs & waistband • gunmetal eyelets • #5 nylon kissing zipper • slim unisex fit



Charcoal Heather/Black

Gunmetal Heather/Charcoal Heather

Black/Gunmetal Heather

Classic Navy/Gunmetal Heather

Cardinal/Gunmetal Heather



# INDDUF BAG

Day Tripper 29L Duffel Bag  
20.5" x 10.5" | 29 Liters | 360 gm (10.5 oz)



10.5oz (360 gm) 100% polyester • waterproof interior PVC coating • carrying handles • removable shoulder strap



Black

Black / Checker Straps

Polka Dot

Cheetah

Black Cheetah



Southwest

Tiger Camo

Forest Camo

Black Camo

White Camo







COLLECTION

Lightweight, ultra-soft & slim fit.





**AFX90UN** Unisex Lightweight Fitted Hooded Pullover

XS-3XL | Slim Unisex Fit | Lightweight | 210 gm (6.5 oz)

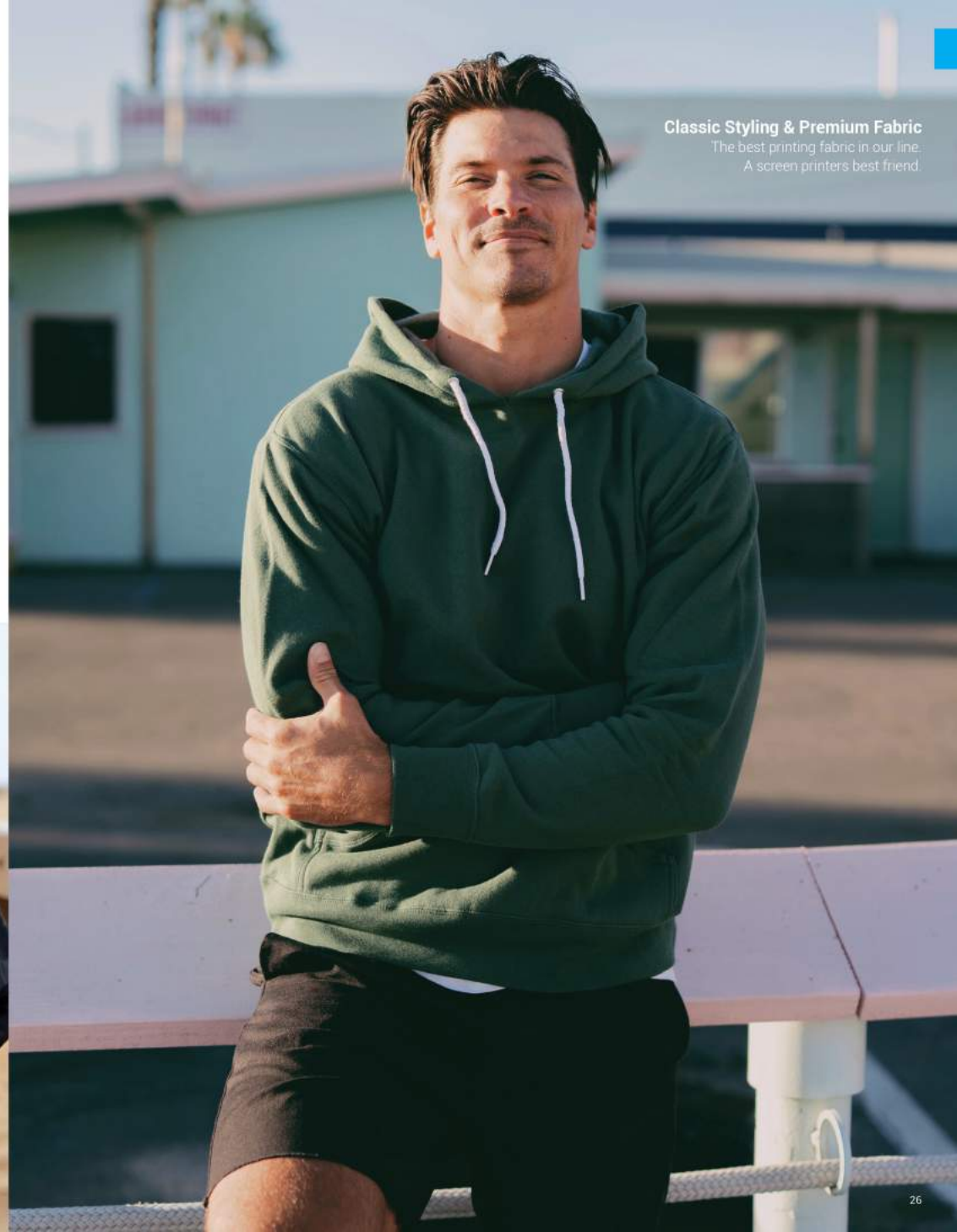


6.5oz. (210gm) pre-laundered cotton/polyester blend fleece • 100% cotton 40 singles face yarn for supreme printability and softness • unlined hood • split stitch double needle sewing on all seams • twill neck tape • 1x1 ribbing at cuffs, waistband & pocket openings • nickel eyelets • plastic tipped white round drawcord • slim unisex fit



**Classic Styling & Premium Fabric**

The best printing fabric in our line.  
A screen printers best friend.







**Classic Styling & Premium Fabric**

The best printing fabric in our line.  
A screen printers best friend!



**Unisex Lightweight Fitted Zip Hood**  
XS-3XL | Slim Unisex Fit | Lightweight | 210 gm (6.5 oz)

**AFX90UNZ**

6.5oz. (210gm) pre-laundered cotton/polyester blend fleece • 100% cotton 40 singles face yarn for supreme printability and softness • unlined hood • split stitch double needle sewing on all seams • twill neck tape • 1x1 ribbing at cuffs, waistband & pocket openings • nickel eyelets • #5 white coil kissing zipper with nickel pull • plastic-tipped white round drawcord • slim unisex fit





# AFX64CRP | Women's Lightweight Crop Hooded Pullover

XS-2XL | Standard Fit | Lightweight | 210 gm (6.5 oz)



6.5oz. (210gm) pre-laundered, cotton/polyester blend fleece • 100% cotton 40 singles face yarn for supreme printability and softness • split stitch double needle sewing on all seams • 3/8" flat drawcord • twill neck tape • 1x1 ribbing at cuffs • sewn eyelets • tear away neck label



**CROP  
HOODIE**

**Bold, Fashion-Forward**  
garment that's fun & stylish.





**CROP  
CREW**

**Bold, Fashion-Forward**  
garment that's fun & stylish.



**Women's Lightweight Crop Crew Neck**  
XS-2XL | Standard Fit | Lightweight | 210 gm (6.5 oz)

**AFX24CRPC**

6.5oz. (210gm) pre-laundered, cotton/polyester blend fleece  
 • 100% cotton 40 singles face yarn for supreme printability and softness  
 • split stitch double needle sewing on all seams  
 • twill neck tape • 1x) ribbing at cuffs • tear away neck label



Black



Grey Heather



White



Bone



Blush



Sage



Black Camo



Tie Dye  
Cotton Candy





**AFX4000** | Men's Lightweight Fitted Hooded Pullover  
XS-3XL | Slim Fit | Lightweight | 210 gm (6.5 oz)



6.5oz. (210gm) pre-laundered, cotton/polyester blend fleece • 100% cotton 40 singles face yarn for supreme printability and softness • jersey lined hood • split stitch double needle sewing on all seams • twill neck tape • 1x1 ribbing at cuffs, waistband & pocket openings • nickel eyelets • slim fit



Black Charcoal Heather Gunmetal Heather Grey Heather



Navy Army Red Heather



**The Best Printing Fabric In Our Line**  
A screen printers best friend.



**The Best Printing Fabric In Our Line**  
A screen printers best friend.



**Men's Lightweight Fitted Zip Hood** | **AFX4000Z**  
XS-3XL | Slim Fit | Lightweight | 210 gm (6.5 oz)

6.5oz. (210gm) pre-laundered, cotton/polyester blend fleece • 100% cotton 40 singles face yarn for supreme printability and softness • jersey lined hood • split stitch double needle sewing on all seams • twill neck tape • 1x1 ribbing at cuffs, waistband & pocket openings • nickel eyelets • #5 nickel kissing zipper • slim fit



Black Charcoal Heather Gunmetal Heather Navy



*Expedition*  
COLLECTION

Warm, functional, durable & quality.







## Men's Lightweight Pullover Windbreaker Anorak Jacket

XS-3XL (XXS available in select colors) | Standard Fit | Lightweight | 82 gm

# EXP54LWP

82gm 100% polyester lightweight water resistant fabric • matte finish eyelets and zippers • #4 zipper with zipper pull & rubber zipper pull tab • reversed zipper tape • fine mesh hood liner • three panel hood • blizzard neck • self neck tape • pouch pocket • bungee toggle at waistband • elastic cuffs • locker loop in center back neck

Screen Printers Please Note:  
This garment is 100% Polyester. Poly inks are recommended. Please do your own testing.



Black



Army / Black Zip



Smoke / Black Zip



Aqua  
(XXS-3XL)



Blush  
(XXS-3XL)



Smoke / Graphite



Classic Navy / Red



Black Camo





# EXP54LWZ

## Men's Lightweight Windbreaker Jacket

XS-3XL (XXS available in select colors) | Standard Fit | Lightweight | 82 gm



82 gm 100% polyester lightweight water resistant fabric • matte finish eyelets and zippers • #4 zipper with zipper pull & rubber zipper pull tab • reversed zipper tape • fine mesh hood liner • three panel hood • blizzard neck • self neck tape • welt pockets with mesh pocket bags • bungee toggle at waistband • elastic cuffs • locker loop in center back neck

Screen Printer's Please Note:  
This garment is 100% Polyester. Poly inks are recommended. Please do your own testing.





# EXP64CRP | Women's Lightweight Crop Windbreaker

XS-2XL | Standard Fit | Lightweight | 82 gm



82gm 100% polyester lightweight water resistant fabric • matte finish eyelets and zippers • zipper pull & zipper pull string • reversed zipper tape • fine mesh hood liner • three panel hood • blizzard neck • self neck tape • bungee toggle at waistband • elastic cuffs • locker loop in center back neck

Screen Printers Please Note:  
This garment is 100% Polyester. Poly inks are recommended. Please do your own testing.



Black



Blush / White Zip



White Camo



Black Camo



**CROP**  
WINDBREAKER

**Bold, Fashion-Forward**  
garment that's fun & stylish.



Wear it in, pack it out.  
Packable Pocket





### Men's Lightweight Bomber Jacket

XS-3XL | Standard Fit | Lightweight | 82 gm

## EXP52BMR

82gm 100% polyester lightweight water resistant fabric • 100% polyester 1x1 ribbing • waterproof pressure resistance: 600 mm • #5 vislon zipper • self neck tape • welt pockets • locker loop in center back

Screen Printers Please Note:  
This garment is 100% Polyester. Poly inks are recommended. Please do your own testing.



Black



Army



Black / White Stripe





# EXP50F | Men's Flannel Shirt

XS-3XL | Standard Fit | 200 gm



200gm cotton/polyester blend flannel • button closure • double front pockets with top flap opening • rollup sleeve vents • tear away neck label



Charcoal Heather / Black



Grey Heather / Black



Red / Black



Olive / Black



### Many Ways to Customize

Easily customize our stock flannel with embroidery, sewn patch, screen print, woven labels & more.







**Concealed Embroidery Access**



**Our Workwear Jacket & Vest**

have a full width hidden zipper for screenprint & embroidery access to easily print multi-color logos & hide embroidery backing on the inside of the garment.

**EXP550Z Men's Insulated Canvas Workwear Jacket**

XS-3XL | Generous Fit | 100% Cotton Canvas | 360 gm



360gm 100% cotton canvas shell • 60gm hyper-loft poly fill insulation • 100% polyester lining • heavy duty antique brass zipper front closure • antique brass eyelets • 3 panel hood • articulated elbows • 100% cotton drawcord • interior back neck locker patch • 2x2 ribbing at cuffs & waistband • triple needle stitching • #3 hidden dress zipper for concealed embroidery access • tear away neck label

**HYPER-LOFT**  
INSULATION



Black



Saddle



**Men's Insulated Canvas Workwear Vest EXP560V**

XS-3XL | Standard Fit | 100% Cotton Canvas | 360 gm

360gm 100% cotton canvas shell • 60gm hyper-loft poly fill insulation • 100% polyester lining • heavy duty antique brass 6 snap front closure • hyper-loft insulation • interior back neck locker patch • 2x2 ribbing at collar • #3 hidden dress zipper for concealed embroidery access • tear away neck label

**HYPER-LOFT**  
INSULATION



Black



Saddle



## EXP100PFZ

### Men's Hyper-Loft Puffy Jacket

XS-3XL | Standard Fit | 100% Nylon Shell

100% nylon exterior shell • 60gm hyper-loft poly fill insulation • 100% polyester lining • #5 reverse coil zippers at chest and pockets • packable pocket with #3 reverse coil zipper • capped elastic sleeve cuff • locker loop • plastic cinche toggle • tear away neck label • concealed chest pocket for embroidery access



**HYPER-LOFT**  
INSULATION



Black



PACKABLE CHEST POCKET



Wear it in.  
Pack it out.  
Packable Pocket



## EXP120PFV

### Men's Hyper-Loft Puffy Vest

XS-3XL | Standard Fit | 100% Nylon Shell

100% nylon exterior shell • 60gm hyper-loft poly fill insulation • 100% polyester lining • #5 reverse coil zippers at chest and pockets • packable pocket with #3 reverse coil zipper • capped elastic arm opening • locker loop • plastic cinche toggle • tear away neck label • concealed chest pocket for embroidery access



**HYPER-LOFT**  
INSULATION



Black



PACKABLE CHEST POCKET



Wear it in.  
Pack it out.  
Packable Pocket



## EXP200PFZ

### Women's Hyper-Loft Puffy Jacket

XS-2XL | Standard Fit | 100% Nylon Shell

100% nylon exterior shell • 60gm hyper-loft poly fill insulation • 100% polyester lining • #5 reverse coil zippers at chest and pockets • packable pocket with #3 reverse coil zipper • capped elastic sleeve cuff • locker loop • plastic cinche toggle • tear away neck label • concealed chest pocket for embroidery access

**HYPER-LOFT**  
INSULATION



Black



PACKABLE CHEST POCKET



Wear it in.  
Pack it out.  
Packable Pocket



## EXP220PFV

### Women's Hyper-Loft Puffy Vest

XS-2XL | Standard Fit | 100% Nylon Shell

100% nylon exterior shell • 60gm hyper-loft poly fill insulation • 100% polyester lining • #5 reverse coil zippers at chest and pockets • packable pocket with #3 reverse coil zipper • capped elastic arm opening • locker loop • plastic cinche toggle • tear away neck label • concealed chest pocket for embroidery access

**HYPER-LOFT**  
INSULATION



Black



PACKABLE CHEST POCKET



Wear it in.  
Pack it out.  
Packable Pocket







**EXP95NB** | Men's Heavyweight Windbreaker Hooded Jacket

XS-3XL | Standard Fit | 100% Nylon | Heavyweight | 150 gm 320D



100% nylon 150gm 320 denier • waterproof coating: 10,000 MM • inner pu coating breathability: 5,000 G/M<sup>2</sup> • unlined hood • self neck tape • antique brass eyelets (Black/Black Colorway = Matte Black Metal Eyelets) • antique brass 6 snap front closure (Black/Black Colorway = Matte Black Metal Snaps) • elastic cuffs • underarm grommets • drawcord closure at hood and bottom opening • standard fit



Black/Black

Black

Classic Navy

Classic Khaki

Forest Camo



**Men's Heavyweight Windbreaker Coaches Jacket**

XS-3XL | Standard Fit | 100% Nylon | Heavyweight | 150 gm 320D

**EXP99CNB**

100% nylon 150gm 320 denier • waterproof coating: 10,000 MM • inner pu coating breathability: 5,000 G/M<sup>2</sup> • self neck tape • antique brass eyelets (Black/Black Colorway = Matte Black Metal Eyelets) • antique brass 6 snap front closure (Black/Black Colorway = Matte Black Metal Snaps) • elastic cuffs • underarm grommets • drawcord closure at bottom opening • standard fit



Black/Black

Black

Classic Navy

Classic Khaki

Forest Camo



# EXP94NAW

## Men's Heavyweight Water-Resistant Windbreaker Anorak Jacket

XS-3XL | Standard Fit | 100% Nylon | Heavyweight | 150 gm 320D



100% nylon 150gm 320 denier • waterproof coating: 10,000 MM • inner pu coating breathability: 5,000 G/M<sup>2</sup> • dtm neck taping • #5 dtm body coil zipper • matte metal zipper pull • rubber zipper pull tab • zipper garage • fine mesh hood liner • matte nickel metal eyelets 3 panel hood • scuba neck • round poly drawstring • hidden snaps inside front pocket flap • side slit pockets • tightening toggle at waistband • elastic cuffs



Black

Graphite

Classic Navy

Forest Camo

Black Camo







**Comfort & Warmth**  
 Concealed embroidery access  
 for embellishing.



## EXP35SSZ

### Men's Poly-Tech Soft Shell Jacket

XS-3XL | Generous Fit | Heavyweight | 460 gm (13.8 oz)



13.8oz/460gm total weight • 300 gm 100% water proof polyester shell bonded to graphite colored 160gm micro fleece lining • waterproof coating, 20,000 MM • #5 black reverse coil water resistant zippers • gunmetal zipper pull with black zipper pull tab • 3 panel hood • scuba neck • left chest pocket and welt pockets • zipper garage • toggles at hood and bottom side seams • antique nickel eyelets • media pocket with eyelet

Screen Printers Please Note: Low cure poly ink & poly blocker recommended. Keep garment temperature under 300°.



Black



Classic Navy



Graphite



### Men's Heavyweight Poly-Tech Zip Hood

XS-2XL | Standard Fit | Heavyweight | 330gm (10 oz)

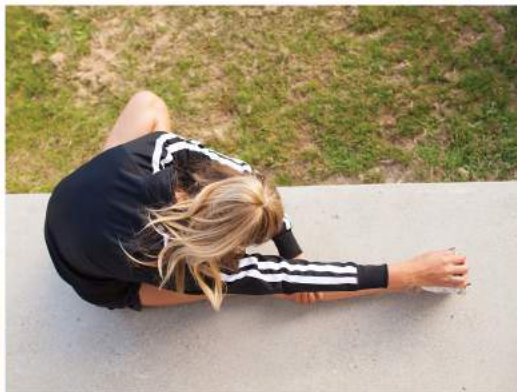
## EXP80PTZ

10oz. (330gm) polyester/cotton water-resistant fleece body with 100% polyester pique panels • 100% anti-pill polyester face • removable zip off hood with interior cadet collar • 1x1 ribbing at cuffs and waistband • antique nickel eyelets • #5 dtm coil exposed zipper • antique nickel tipped dtm flat drawcord • thumbholes at cuffs • media pocket & eyelet in front welt pocket • standard fit



Black





## Women's Lightweight Poly-Tech Zip | EXP60PAZ

XS-3XL | Slim Fit | Lightweight | 190gm (5.5 oz)

5.5oz (190gm) 100% poly fleece • #5 dtm exposed coil zipper  
 • antique nickel zipper pull with dtm zipper pull tab • zipper garage  
 • hidden stash pocket • thumbholes at cuffs • slim fit



Black



Gunmetal Heather



White



Aster Blue



Lapis Green



Coral

## EXP70PTZ | Unisex Poly-Tech Zip Track Jacket

XS-2XL | Regular Fit | Lightweight | 220 gm (6.5 oz)



6.5oz (220gm) 100% poly fleece • 2 stripes on raglan sleeves • 1x1 ribbing at cuffs & waistband • #5 contrast coil kissing zipper with nickel pull • twill neck tape • media pocket and eyelet • regular fit

Please Note: Colorway Black/Black has no stripes.



Black/Black



Black



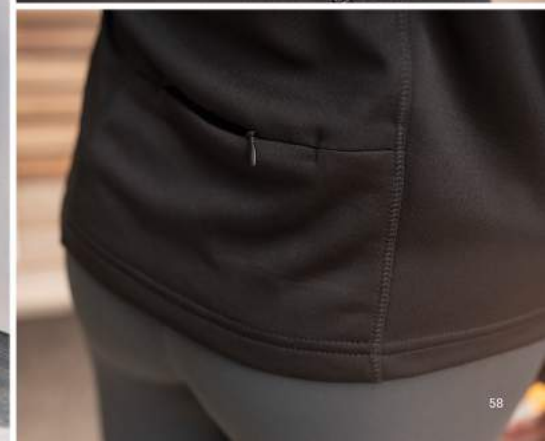
Classic Navy



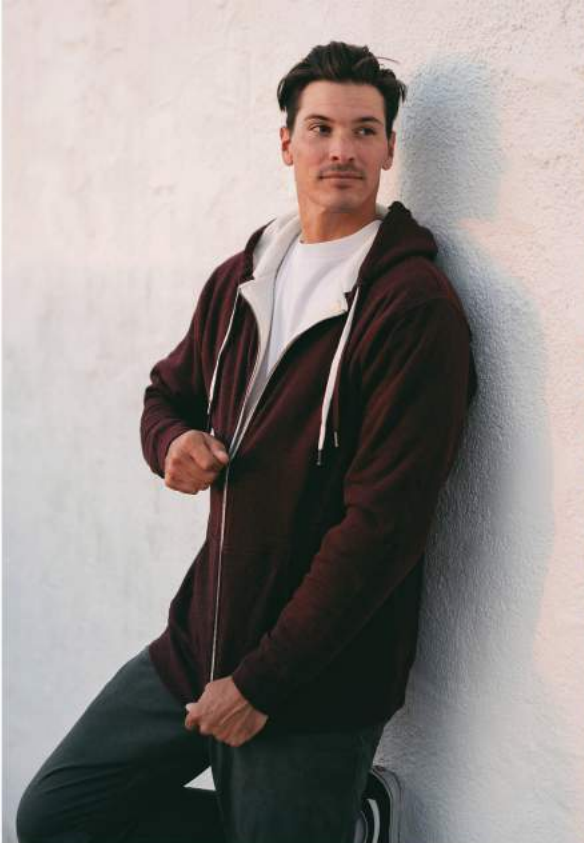
Gunmetal Heather



Brick Red







## EXP40SHZ

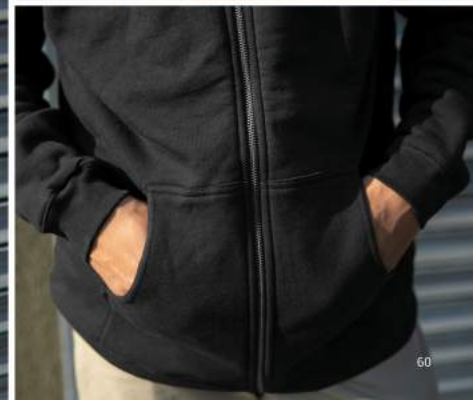
### Men's Heavyweight Sherpa Lined Zip Hood

S-4XL | Generous Fit | Heavyweight | 280gm (8.5 oz)

14 oz. total weight • 8.5oz. (280gm) cotton/polyester blend fleece exterior • 5.5 oz (180 gm) 100% polyester sherpa lined interior • 100% cotton 32 singles face yarn for supreme printability and softness • split stitch double needle sewing on all seams • twill neck tape • 1x1 ribbing at cuffs & waistband • antique nickel eyelets • #5 antique nickel exposed zipper • generous fit



Black / Natural



## EXP90SHZ | Unisex Heavyweight Sherpa Lined Zip Hood

XS-2XL | Slim Unisex Fit | Heavyweight | 250 gm (7.5 oz)



12.3oz. total weight • 7.5oz. (250gm) pre-laundered cotton/polyester blend french terry • 4.7 oz (160 gm) 100% polyester sherpa lined interior • 32 singles face yarn for supreme printability and softness • split stitch double needle sewing • 1x1 ribbing at cuffs & waistband • antique nickel eyelets • antique nickel tipped flat drawcord • 2 drawcords (1-DTM & 1-Natural) • #5 antique nickel exposed zipper • media pocket & eyelet in front pocket • thumbholes at cuffs • twill neck tape • unisex fit



Black

Charcoal Heather

Salt & Pepper

Burgundy Heather

Navy Heather

Sky Heather



**STANDARD  
SUPPLY**

COLLECTION

Standard in style, quality & fit.







## SS4500 Men's Midweight Hooded Pullover

XS-3XL (4XL & 5XL available in select colors) | Standard Fit | Midweight | 280 gm (8.5 oz)

8.5oz. (280gm) cotton/polyester blend fleece • Solid Colors & Gunmetal Heather. 80% cotton/20% polyester with 100% cotton 20 singles face yarn for supreme printability and softness • Grey Heather: 75% cotton/25% polyester • All other Heather Colors: 55% cotton/45% polyester • jersey lined hood • split stitch double needle sewing on all seams • twill neck tape • 1x1 ribbing at cuffs & waistband • metal eyelets • standard fit



Black (XS-5XL) Charcoal Heather (XS-5XL)



Solid Charcoal Gunmetal Heather Grey Heather (XS-5XL) Smoke White (XS-5XL) Classic Navy Classic Navy Heather



Maroon (XS-5XL) Alpine Green Army (XS-5XL) Army Heather (XS-5XL) Brown Saddle Sandstone (XS-5XL) Bone (XS-5XL)



Purple Lavender (XS-5XL) Light Pink (XS-5XL) Peach Light Yellow (XS-5XL) Mint (XS-5XL) Blue Aqua (XS-5XL) Safety Yellow (XS-5XL)



Royal (XS-5XL) Royal Heather Forest Green Kelly Green Kelly Green Heather (XS-5XL) Red (XS-5XL) Orange Gold (XS-5XL)



Safety Orange (XS-5XL) Neon Pink Forest Camo (XS-5XL) Black Camo (XS-5XL)



# SS4500Z Men's Midweight Zip Hood

XS-3XL | Standard Fit | Midweight | 280 gm (8.5 oz)



8.5oz (280gm) cotton/polyester blend fleece • Solid Colors & Gunmetal Heather: 80% cotton/20% polyester with 100% cotton 20 singles face yarn • Grey Heather: 75% cotton/25% polyester • All other Heather Colors: 55% cotton/45% polyester • jersey lined hood • split stitch double needle sewing on all seams • twill neck tape • 1x1 ribbing at cuffs & waistband • metal eyelets • #5 metal kissing zipper • standard fit



Black Charcoal Heather Solid Charcoal Gunmetal Heather Grey Heather White



Navy Classic Navy Heather (XS-2XL) Maroon Alpine Green Army



Army Heather (XS-2XL) Sandstone Royal (XS-2XL) Safety Yellow Forest Camo





# SS3000 | Men's Midweight Crew Neck

XS-3XL (4XL & 5XL available in select colors) | Standard Fit | Midweight | 280 gm (8.5 oz)



8.5oz. (280gm) cotton/polyester blend fleece • Solid Colors: 8 Gunmetal Heather, 80% cotton/20% polyester with 100% cotton 20 singles face yarn • Grey Heather: 75% cotton/25% polyester • All other Heather Colors: 55% cotton/45% polyester • split stitch double needle sewing on all seams • twill neck tape • 1x1 ribbing at collar, cuffs and waistband • standard fit





**SS1000** Unisex Lightweight Loopback Terry Hooded Pullover

XS-3XL | Slim Unisex Fit | Lightweight | 250 gm (7.5 oz)



7.5oz. (250gm) cotton/polyester blend • loopback terry fabric • 20 singles face yarn • antique silver eyelets • double shoelace drawcords w/ antique silver metal tips • twill neck tape • tear away neck label • 1x1 ribbing at cuffs & waistband • unisex fit



Black Charcoal Heather Athletic Heather White Misty Blue Rose



Indigo Port Olive Harvest Gold Sand Bone



**Double Drawcords!**  
Ditch the one you don't like,  
or rock both.







**Double Drawcords!**  
Ditch the one you don't like,  
or rock both.



**Unisex Lightweight Loopback Terry Zip Hood**  
XS-3XL | Slim Unisex Fit | Lightweight | 250 gm (7.5 oz)

**SS1000Z**

7.5oz. (250gm) cotton/polyester blend • loopback terry fabric • 20 singles face yarn • antique silver zipper & zipper pull • antique silver zipper & zipper pull • antique silver eyelets • double shoelace drawcords w/ antique silver metal tips • twill neck tape • tear away neck label • 1x1 ribbing at cuffs & waistband • unisex fit







### Loopback Terry

Unique fabric, modern colors, and everyday comfort



## SS1000C Unisex Lightweight Loopback Terry Crew Neck

XS-3XL | Slim Unisex Fit | Lightweight | 250 gm (7.5 oz)



7.5oz (250gm) cotton/polyester blend • loopback terry fabric • 20 singles face yarn • twill neck tape • tear away neck label • 1x1 ribbing at cuffs & waistband • unisex fit



Black

Charcoal Heather

Athletic Heather

White

Misty Blue

Rose



Indigo

Port

Olive

Harvest Gold

Sand

Bone



# SS008 | Women's Midweight Hooded Pullover

XS-2XL | Standard Fit | Midweight | 280 gm (8.5 oz)



8.5oz. (280gm) cotton/polyester blend fleece • Solid Colors: 80% cotton/20% polyester with 100% cotton 20 singles face yarn for supreme printability and softness • Grey Heather: 75% cotton/25% polyester • Charcoal Heather: 55% Cotton/45% Polyester • jersey lined hood • split stitch double needle sewing on all seams • twill neck tape • 1x1 ribbing at cuffs & waistband • sewn eyelets • tear away neck label • standard fit

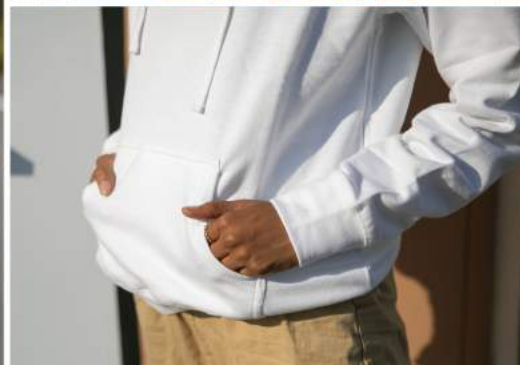


Black

Charcoal Heather

Grey Heather

White



**Best Value Midweight Hoodie**  
Great price & great quality



# SS650 Women's Lightweight Hooded Pullover

XS-2XL | Slim Fit | Lightweight | 220 gm (6.5 oz)



6.5oz, (220gm) cotton/polyester blend fleece • cotton/polyester blend 24 singles face yarn • unlined hood • split stitch double needle sewing • twill neck tape • 1x1 ribbing at cuffs & waistband • metal eyelets • slim fit

Screen Printers Please Note:  
This fabric is not made of 100% cotton face yarn.



Black

Charcoal Heather

Gunmetal Heather

White

Misty Blue

Dusty Rose

Light Blackberry





# SS650Z | Women's Lightweight Zip Hood

XS-2XL | Slim Fit | Lightweight | 220 gm (6.5 oz)



6.5oz. (220gm) cotton/polyester blend fleece • cotton/polyester blend 24 singles face yarn • unlined hood • split stitch double-needle sewing • twill neck tape • 1x1 ribbing at cuffs & waistband • metal eyelets • #5 dtm coil kissing zipper • slim fit

Screen Printers Please Note:

This fabric is not made of 100% cotton face yarn.



Black

Charcoal Heather

Gunmetal Heather

White

Misty Blue

Dusty Rose

Light Blackberry





**SS240** | Women's Lightweight Crew  
XS-2XL | Slim Fit | Lightweight | 220 gm (6.5 oz)



6.5oz. (220gm) cotton/polyester blend fleece • cotton/polyester blend  
24 singles face yarn • split stitch double needle sewing • twill neck tape  
• 1x1 ribbing at cuffs & waistband • 1x1 rib capped neckline • slim fit

Screen Printers Please Note:  
This fabric is not made of 100% cotton face yarn.



Black

Charcoal Heather

Gunmetal Heather

Misty Blue

Dusty Rose

Light Blackberry







Specialty fabrics, unique details & colors.





# PRM4500 Unisex Midweight Pigment Dye Hooded Pullover

XS-3XL | Standard Fit | Midweight | 300 gm (9 oz)



9oz. (300gm) cotton/polyester blend fleece • 100% cotton 30 singles face yarn • jersey lined hood • split stitch double needle sewing on all seams • twill neck tape • 1x1 ribbing at cuffs and waistband • sewn eyelets • standard fit



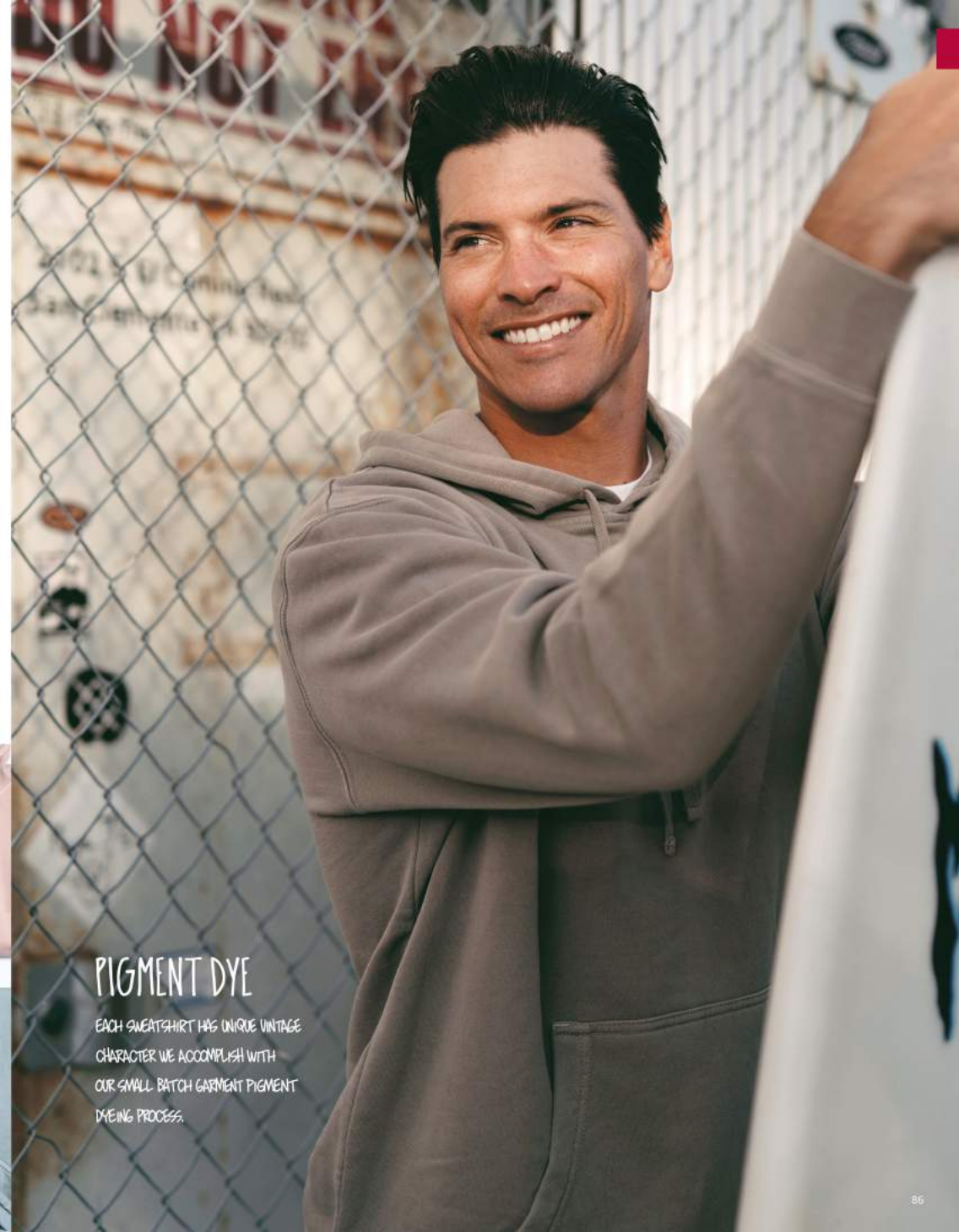
Pigment Black    Pigment Maroon    Pigment Slate Blue    Pigment Alpine Green    Pigment Sandstone    Pigment Light Blue



Pigment Mint    Pigment Pink    Pigment Yellow    Pigment Amber    Pigment Plum    Pigment Clay



Pigment Cement    Pigment Dusty Pink    Pigment Sage    Pigment Ivory    Prepared For Dye



## PIGMENT DYE

EACH SWEATSHIRT HAS UNIQUE VINTAGE CHARACTER WE ACCOMPLISH WITH OUR SMALL BATCH GARMENT PIGMENT DYEING PROCESS.



**PRM3500** Unisex Midweight Pigment Dye Crew Neck

XS-3XL | Standard Fit | Midweight | 300 gm (9 oz)



9oz (300gm) cotton/polyester blend fleece • 100% cotton 30 singles face yarn • split stitch double needle sewing on all seams • twill neck tape • 1x1 ribbing at cuffs and waistband • standard fit



**PIGMENT DYE**

EACH SWEATSHIRT HAS UNIQUE VINTAGE CHARACTER WE ACCOMPLISH WITH OUR SMALL BATCH GARMENT PIGMENT DYEING PROCESS.



# PRM50PTPD



## Men's Pigment Dye Fleece Pant

XS-2XL | Relaxed Fit | Midweight | 300 gm (9 oz)

9oz (300 gm) cotton/polyester blend • ring spun cotton • 100% cotton 30 singles face yarn • elastic waistband • flat drawcord • 1x1 ribbing at ankle cuffs • sewn eyelets • sewn fly detail • back pocket • Jersey lined hand pockets • relaxed fit



Pigment Black

Pigment Maroon

Pigment Slate Blue



Pigment Alpine Green

Pigment Sandstone

Pigment Light Blue



Pigment Mint

Pigment Pink

Pigment Yellow



Prepared For Dye



PIGMENT DYE



# PRM50STPD

## Men's Pigment Dye Fleece Short

XS-2XL | Relaxed Fit | Midweight | 300 gm (9 oz)

9oz (300 gm) cotton/polyester blend • ring spun cotton • 100% cotton 30 singles face yarn • elastic waistband • flat drawcord • sewn eyelets • sewn fly detail • back pocket • Jersey lined hand pockets • relaxed fit with tapered knee opening



Pigment Black

Pigment Maroon



Pigment Slate Blue

Pigment Alpine Green



Pigment Sandstone

Pigment Light Blue



Pigment Mint

Pigment Pink



Pigment Yellow

Prepared For Dye



PIGMENT DYE



**PRM2500** | Women's California Wave Wash Hooded Pullover  
 XS-2XL | Standard Fit | Lightweight | 230 gm (7 oz)



7.0oz. (230gm) 52% cotton/48% polyester blend • 3-end fleece • raglan sleeves  
 • blind stitch • coverstitch sewing • sewn eyelets • twill neck tape • standard fit

Screen Printers Please Note:  
 This fabric is not made of 100% cotton face yarn.



Black      Shadow      Bone      Blush



Dusty Rose      Misty Blue      Sage      Forest Camo Heather      Black Camo Heather



California Wave Wash  
 One of a kind fit, feel,  
 and color tone.





California Wave Wash  
One of a kind fit, feel,  
and color tone.

### PRM2500Z | Women's California Wave Wash Zip Hood

XS-2XL | Standard Fit | Lightweight | 230 gm (7 oz)



7.0oz. (230gm) 52% cotton/48% polyester blend • 3-end fleece  
• raglan sleeves • blind stitch • coverstitch sewing • sewn  
eyelets • twill neck tape • antique nickel zipper • standard fit

Screen Printers Please Note:  
This fabric is not made of 100% cotton face yarn.



Black

Shadow

Misty Blue

Sage

Dusty Rose

Blush

Bone



### Women's California Wave Wash Crew Neck | PRM2000

XS-2XL | Standard Fit | Lightweight | 230gm (7 oz)

7.0oz. (230gm) 52% cotton/48% polyester blend • 3-end fleece  
• raglan sleeves • blind stitch • coverstitch sewing • standard fit

Screen Printers Please Note:  
This fabric is not made of 100% cotton face yarn.



Black

Shadow

Misty Blue

Sage

Dusty Rose

Blush

Bone





**California Wave Wash**  
 One of a kind fit, feel,  
 and color tone.



**PRM20PNT**

**Women's California Wave Wash Pant**

XS-2XL | Standard Fit | Lightweight | 230 gm (7 oz)

7.0oz (230gm) 52% cotton/48% polyester blend • 3-end fleece • blind stitch  
 • coverstitch sewing • elastic waistband with shoestring drawcord • 1x1  
 ribbing at ankle cuffs • sewn eyelets • jersey lined handpockets • standard fit

Screen Printers Please Note  
 This fabric is not made of 100% cotton face yarn.



Black                      Shadow                      Misty Blue



Sage                      Dusty Rose                      Blush



Bone                      Forest Camo Heather                      Black Camo Heather



# PRM20SRT

## Women's California Wave Wash Short

XS-2XL | Standard Fit | Lightweight | 230 gm (7 oz)

7.0oz. (230gm) 52% cotton / 48% polyester blend • 3-end fleece • blind stitch • coverstitch sewing • elastic waistband with shoestring drawcord • sewn eyelets • jersey lined hand pockets • standard fit

Screen Printers Please Note:  
This fabric is not made of 100% cotton face yarn.



Black



Shadow



Misty Blue



Sage



Dusty Rose



Blush



Bone



Forest Camo Heather



Black Camo Heather



California Wave Wash  
One of a kind fit, feel,  
and color tone.







**PRM4500TD** | Unisex Midweight Tie Dye Hooded Pullover  
XS-3XL | Standard Fit | Midweight | 300 gm (9 oz)



9oz. (300gm) cotton/polyester blend fleece • 100% cotton 30 singles face yarn • jersey lined hood • split stitch double needle sewing on all seams • twill neck tape • 1x1 ribbing at cuffs and waistband • sewn eyelets • standard fit

**PRM3500TD** | Unisex Midweight Tie Dye Crew Neck  
XS-3XL | Standard Fit | Midweight | 300 gm (9 oz)



9oz. (300gm) cotton/polyester blend fleece • 100% cotton 30 singles face yarn • split stitch double needle sewing on all seams • twill neck tape • 1x1 ribbing at cuffs and waistband • standard fit



Tie Dye Black    Tie Dye Navy    Tie Dye Aqua Blue    Tie Dye Pink



Tie Dye Dusty Pink    Tie Dye Olive    Tie Dye Cotton Candy    Tie Dye Sunset Swirl



Tie Dye Black    Tie Dye Navy    Tie Dye Aqua Blue    Tie Dye Pink



Tie Dye Dusty Pink    Tie Dye Olive    Tie Dye Cotton Candy    Tie Dye Sunset Swirl



# PRM50PTTD

## Men's Tie Dye Fleece Pant

XS-2XL | Relaxed Fit | Midweight | 300 gm (9 oz)

9oz (300 gm) cotton/polyester blend • 100% cotton 30 singles face yarn • elastic waistband with flat drawcord • 1x1 ribbing at ankle cuffs • sewn eyelets • sewn fly detail • back pocket • Jersey lined hand pockets • relaxed fit.



Tie Dye Black



TIE DYE NAVY



Tie Dye Aqua Blue



Tie Dye Pink



Tie Dye Cotton Candy



Tie Dye Sunset Surf



# PRM50STTD

## Men's Tie Dye Fleece Short

XS-2XL | Relaxed Fit | Midweight | 300 gm (9 oz)

9oz (300 gm) cotton/polyester blend • 100% cotton 30 singles face yarn • elastic waistband with flat drawcord • sewn eyelets • sewn fly detail • back pocket & Jersey lined hand pockets • relaxed fit with tapered knee opening



Tie Dye Black



Tie Dye Navy





## PRM4500MW

### Unisex Midweight Mineral Wash Hooded Pullover

XS-2XL | Standard Fit | Midweight | 300 gm (9 oz)

9oz (300gm) cotton/polyester blend fleece • 100% cotton 30 singles face yarn • jersey lined hood • split stitch double needle sewing on all seams • twill neck tape • 1x1 ribbing at cuffs and waistband • sewn eyelets • standard fit



Mineral Wash Black



## PRM50PTMW

### Men's Mineral Wash Fleece Pant

XS-2XL | Relaxed Fit | Midweight | 300 gm (9 oz)

9oz (300 gm) cotton/polyester blend • 100% cotton 30 singles face yarn • elastic waistband with flat drawcord • 1x1 ribbing at ankle cuffs • sewn eyelets • sewn fly detail • back pocket • Jersey lined hand pockets • relaxed fit



Mineral Wash Black



## PRM50STMW

### Men's Mineral Wash Fleece Short

XS-2XL | Relaxed Fit | Midweight | 300 gm (9 oz)

9oz (300 gm) cotton/polyester blend • 100% cotton 30 singles face yarn • elastic waistband with flat drawcord • sewn eyelets • sewn fly detail • back pocket & Jersey lined hand pockets • relaxed fit with tapered knee opening



Mineral Wash Black





**PRM90HT** Unisex Midweight French Terry Hooded Pullover  
XS-2XL | Slim Unisex Fit | Midweight | 250 gm (7.5 oz)



7.5oz. (250gm) pre-laundered cotton/polyester blend french terry • 32 singles face yarn for supreme printability and softness • unlined hood • split stitch double needle sewing • 1x1 ribbing at cuffs, waistband & side panels • antique nickel eyelets • two antique nickel tipped flat drawcords (one contrast + one dim) • media pocket & eyelet in front pocket • thumbholes at cuffs • twill neck tape • slim unisex fit

Screen Printers Please Note:  
This fabric is not made of 100% cotton face yarn.



**Unisex Midweight French Terry Zip Hood** **PRM90HTZ**  
XS-3XL | Slim Unisex Fit | Midweight | 250 gm (7.5 oz)



7.5oz. (250gm) pre-laundered cotton/polyester blend french terry • 32 singles face yarn for supreme printability and softness • unlined hood • split stitch double needle sewing • 1x1 ribbing at cuffs & waistband • antique nickel eyelets • antique nickel tipped flat drawcord • #5 antique nickel exposed zipper • media pocket & eyelet in front pocket • thumbholes at cuffs • twill neck tape • slim unisex fit

Screen Printers Please Note:  
This fabric is not made of 100% cotton face yarn.





# PRM33SBP



## Unisex Midweight Special Blend Raglan Hooded Pullover

XS-3XL | Slim Unisex Fit | Midweight | 270 gm (8 oz)

8oz (270gm) cotton/polyester blend • 30 singles cotton/polyester blend face yarn • raglan sleeves • unlined hood • reverse coverstitch sewing • twill neck tape • 1x1 ribbing at cuff, and waistband • sewn eyelets • self fabric side panel inserts • slim unisex fit  
Screen Printers Please Note: This fabric is not made of 100% cotton face yarn.







**PRM33SBZ** Unisex Midweight Special Blend Raglan Zip Hood

XS-3XL | Slim Unisex Fit | Midweight | 270 gm (8 oz)



8oz. (270gm) cotton/polyester blend • 30 singles cotton/polyester blend face yarn • raglan sleeves • unlined hood • reverse coverstitch sewing • twill neck tape • 1x1 ribbing at cuff, and waistband • sewn eyelets • self fabric side panel inserts • #5 antique nickel kissing zipper • slim unisex fit

Screen Printers Please Note: This fabric is not made of 100% cotton face yarn.

**Unisex Midweight Special Blend Raglan Crew Neck**

XS-3XL | Slim Unisex Fit | Midweight | 270 gm (8 oz)

**PRM30SBC**



8oz. (270gm) cotton/polyester blend • 30 singles cotton/polyester blend face yarn • raglan sleeves • reverse coverstitch sewing • twill neck tape • 1x1 ribbing at neck, cuff, and waistband • self fabric side panel inserts • slim unisex fit

Screen Printers Please Note: This fabric is not made of 100% cotton face yarn.



Black Carbon Heather Nickel Heather Midnight Heather Crimson Heather Moss Heather Classic Navy



Maroon Pacific Heather Pomegranate Heather Sea Green Heather Stone Heather Nickel Heather / Black Nickel Heather / Forest Camo



Black Carbon Heather Nickel Heather Midnight Heather Crimson Heather Moss Heather Classic Navy



Maroon Pacific Heather Pomegranate Heather Sea Green Heather Stone Heather Nickel Heather / Black Nickel Heather / Forest Camo





Special Blend



Special Blend

### PRM65DRS Women's Midweight Special Blend Hooded Pullover Dress

XS-ZXL | Slim Fit | Midweight | 270 gm (8 oz)



Boz (270gm) cotton/polyester blend fleece • unlined hood • split stitch double needle sewing • 1x1 ribbing at cuffs & waistband sewn eyelets • crossover neck • two drawcord colors • dtm twill neck tape • front pouch pocket • thumbholes at cuffs • slim fit

Screen Printers Please Note:  
This fabric is not made of 100% cotton face yarn.



### Midweight Special Blend 6'6" Stadium Blanket INDBKTSB

62" x 78" | Midweight | 270 gm (8 oz)

Boz (270gm) cotton/polyester special blend fleece • 30 singles cotton/polyester blend face yarn • 1" self hem with double needle top stitch sewing on all four edges.

Screen Printers Please Note:  
This fabric is not made of 100% cotton face yarn.



Black

Carbon

Nickel

Maroon



Black

Carbon Heather

Nickel Heather

Midnight Heather

Pacific Heather

Pomegranate Heather

Sea Green Heather

Forest Camo

Red Buffalo Plaid

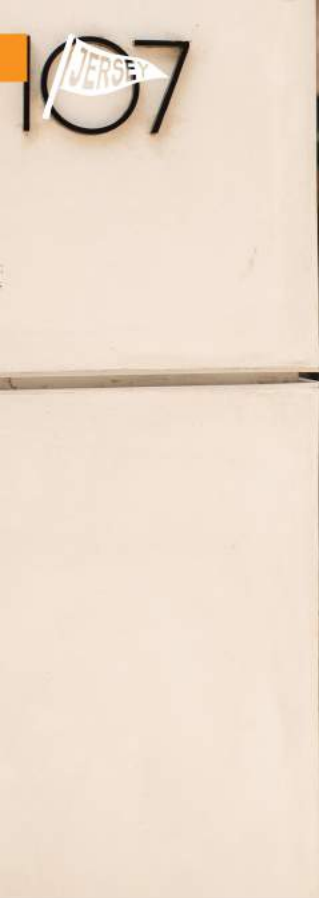


**JERSEY**  
COLLECTION

Lightweight, ultra-soft & fleece alternative.







**SS150J** | Men's Lightweight Jersey Hooded Pullover

XS-3XL | Slim Fit | Lightweight | 150 gm (4.5 oz)



4.5oz. (150gm) cotton/polyester blend jersey • brick red & black are 100% cotton • 30 singles yarn • unlined hood • split stitch double needle sewing • twill neck tape • 1x1 ribbing at cuffs & waistband • sewn eyelets • front pouch pocket • slim fit



Black

Charcoal Heather

Gunmetal Heather

Classic Navy Heather

Olive



**Men's Lightweight Jersey Zip Hood** | **SS150JZ**

XS-3XL | Lightweight | 150 gm (4.5 oz)

4.5oz. (150gm) cotton/polyester blend jersey • brick red & black are 100% cotton • 30 singles yarn • unlined hood • split stitch double needle sewing • twill neck tape • 1x1 ribbing at cuffs & waistband • sewn eyelets • #5 dtm coil kissing zipper • front pouch pocket • slim fit



Black

Charcoal Heather

Gunmetal Heather

Classic Navy Heather

Olive



# Youth

COLLECTION

Quality, standard fit & popular colors.







**PIGMENT DYED**

EACH HOODIE HAS ITS OWN UNIQUE CHARACTER WE ACCOMPLISH WITH OUR SMALL BATCH HAND-PIGMENT DYEING PROCESS.



**PRM1500Y Youth Midweight Pigment Dye Hooded Pullover**

XS-XL | Standard Fit | Midweight | 300 gm (9 oz)



9oz. (300gm) cotton/polyester blend fleece • 100% cotton 30 singles face yarn • jersey lined hood • split stitch double needle sewing on all seams • twill neck tape • 1x1 ribbing at cuffs and waistband • standard fit



**Youth Midweight Tie Dye Hooded Pullover | PRM1500TD**

XS-XL | Standard Fit | Midweight | 300 gm (9 oz)

9oz. (300gm) cotton/polyester blend fleece • 100% cotton 30 singles face yarn • jersey lined hood • split stitch double needle sewing on all seams • twill neck tape • 1x1 ribbing at cuffs and waistband • standard fit



Pigment Black | Pigment Maroon | Pigment Slate Blue | Pigment Alpine Green | Pigment Sandstone



Pigment Light Blue | Pigment Mint | Pigment Pink | Pigment Yellow



Tie Dye Black | Tie Dye Navy | Tie Dye Aqua Blue | Tie Dye Pink



Tie Dye Cotton Candy | Tie Dye Sunset Swirl



## SS4001Y Youth Midweight Hooded Pullover

S-XL | Standard Fit | Midweight | 280 gm (8.5 oz)



8.5 oz (280 gm) cotton/polyester blend fleece • 100% cotton 20 singles face yarn • split stitch double needle sewing on all seams • jersey lined hood • twill neck tape • 1x1 ribbing at cuffs & waistband • no drawcord • standard fit



Black Charcoal Heather Grey Heather White Classic Navy



Royal Heather Red Maroon Alpine Green Mint



Light Pink Forest Camo Black Camo



## SS4001YZ Youth Midweight Zip Hood

S-XL | Standard Fit | Midweight | 280 gm (8.5 oz)



8.5 oz (280 gm) cotton/polyester blend fleece • 100% cotton 20 singles face yarn • jersey lined hood • split stitch double needle sewing on all seams • twill neck tape • no drawcord • 1x1 ribbing at cuffs & waistband • #5 metal kissing zipper • standard fit



Black Charcoal Heather Grey Heather Classic Navy Maroon



Alpine Green Red Royal Heather Mint Light Pink



## EXP24YWZ

### Youth Lightweight Windbreaker Jacket

XS-XL | Standard Fit | Lightweight | 82 gm

82 gm 100% polyester lightweight water resistant fabric • matte finish eyelets and zippers • #4 zipper with zipper pull & rubber zipper pull tab • reversed zipper tape • fine mesh hood liner • three panel hood • blizzard neck • self neck tape • welt pockets with mesh pocket bags • tightening toggle at waistband • elastic cuffs • locker loop in center back neck



Black Black / Graphite



Maroon / Classic Navy Black / Forest Camo







## PRM15YSB

### Youth Lightweight Special Blend Raglan Hooded Pullover

XS-XL | Standard Fit | Lightweight | 210 gm (6.5 oz)



6.5oz. (210gm) cotton/polyester blend • 32 singles cotton/polyester blend face yarn • raglan sleeves • unlined hood • split stitch double needle sewing • twill neck tape • 1x1 ribbing at cuff and waistband

Screen Printers Please Note:  
This fabric is not made of 100% cotton face yarn.



Black

Nickel Heather

Midnight Heather

Crimson Heather

Moss Heather



Nickel Heather/Carbon Heather

Carbon Heather/Black

Nickel Heather/Forest Camo

Pacific Heather

Pomegranate Heather



### Youth Lightweight Special Blend Raglan Zip Hood

XS-XL | Standard Fit | Lightweight | 210 gm (6.5 oz)

## PRM15YSBZ

6.5oz. (210gm) cotton/polyester blend • 32 singles cotton/polyester blend face yarn • raglan sleeves • unlined hood • split stitch double needle sewing • twill neck tape • #5 dtm coil kissing zipper with nickel pull • 1x1 ribbing at cuff and waistband

Screen Printers Please Note:  
This fabric is not made of 100% cotton face yarn.



Black

Nickel Heather

Midnight Heather



Nickel Heather/Carbon Heather

Carbon Heather/Black

Pacific Heather

Pomegranate Heather





**PRM10TSB** | Toddler Lightweight Special Blend Raglan Hooded Pullover

2T, 4T, 5/6 | Standard Fit | Lightweight | 210 gm (6.5 oz)



6.5oz. (210gm) cotton/polyester blend • 32 singles cotton/polyester blend face yarn • raglan sleeves • unlined hood • split stitch double needle sewing • twill neck tape • 1x1 ribbing at cuff and waistband

Screen Printers Please Note:  
This fabric is not made of 100% cotton face yarn.



Black Nickel Heather Midnight Heather Crimson Heather Moss Heather



Nickel Heather/Carbon Heather Carbon Heather/Black Nickel Heather/Forest Camo Pacific Heather Pomegranate Heather

Toddler Lightweight Special Blend Raglan Zip Hood | **PRM10TSBZ**

2T, 4T, 5/6 | Standard Fit | Lightweight | 210 gm (6.5 oz)



6.5oz. (210gm) cotton/polyester blend • 32 singles cotton/polyester blend face yarn • raglan sleeves • unlined hood • split stitch double needle sewing • twill neck tape • #5 dtm coil kissing zipper with nickel pull • 1x1 ribbing at cuff and waistband



Black Nickel Heather Midnight Heather



Nickel Heather/Carbon Heather Carbon Heather/Black Pacific Heather Pomegranate Heather



# PRM11PNT & PRM16PNT

Toddler & Youth Lightweight Special Blend Pant  
2T, 4T, 5/6, XS-XL | Standard Fit | Lightweight | 210 gm (6.5 oz)

Toddler & Youth Lightweight Special Blend Short  
2T, 4T, 5/6, XS-XL | Standard Fit | Lightweight | 210 gm (6.5 oz)

# PRM11SRT & PRM16SRT



6.5oz. (210gm) cotton/polyester blend • 32 singles cotton/polyester blend face yarn • elastic waistband • flat drawcord • sewn eyelets • sewn fly detail • back pocket • jersey lined hand pockets • tear away label • relaxed fit

Screen Printers Please Note:  
This fabric is not made of 100% cotton face yarn.

6.5oz. (210gm) cotton/polyester blend • 32 singles cotton/polyester blend face yarn • elastic waistband • flat drawcord • sewn eyelets • sewn fly detail • back pocket • jersey lined hand pockets • tear away label • relaxed fit with tapered knee opening

Screen Printers Please Note:  
This fabric is not made of 100% cotton face yarn.



Black



Nickel Heather



Forest Camo Heather



Black



Nickel Heather



Forest Camo Heather





# STYLE INDEX

INDEPENDENT AFX EXPEDITION STANDARD SUPPLY



## INDEPENDENT



**IND5000P** Men's Premium Heavyweight Hooded Pullover 13 Colors / Pg. 9  
**IND5000C** Men's Premium Heavyweight Crew 13 Colors / Pg. 11  
**IND4000** Men's Heavyweight Hooded Pullover 43 Colors / Pg. 13  
**IND4000Z** Men's Heavyweight Zip Hood 12 Colors / Pg. 15  
**IND20PNT** Men's Midweight Fleece Pant 14 Colors / Pg. 17

## AFX



**IND20SRT** Men's Midweight Fleece Short 14 Colors / Pg. 18  
**IND40RP** Men's Lightweight Raglan Hooded Pullover 8 Colors / Pg. 19  
**IND45UVZ** Unisex Heavyweight Varsity Zip Hood 5 Colors / Pg. 20  
**INDDUFBAG** Day Tripper 29L Duffel Bag 10 Colors / Pg. 21  
**AFX90UN** Unisex Lightweight Fitted Hooded Pullover 14 Colors / Pg. 25  
**AFX90UNZ** Unisex Lightweight Fitted Zip Hood 16 Colors / Pg. 27  
**AFX64CRP** Women's Lightweight Crop Hooded Pullover 8 Colors / Pg. 29  
**AFX24CRPC** Women's Lightweight Crop Crew 8 Colors / Pg. 31  
**AFX4000** Men's Lightweight Fitted Hooded Pullover 7 Colors / Pg. 33

## EXPEDITION



**AFX4000Z** Men's Lightweight Fitted Zip Hood 4 Colors / Pg. 34  
**EXP54LWP** Men's Lightweight Windbreaker Anorak Jacket 8 Colors / Pg. 37  
**EXP54LWZ** Men's Lightweight Windbreaker Jacket 19 Colors / Pg. 39  
**EXP64CRP** Women's Lightweight Pullover Crop Windbreaker 4 Colors / Pg. 41  
**EXP52BMR** Men's Premium Bomber Jacket 3 Colors / Pg. 43  
**EXP50F** Men's Flannel Shirt 4 Colors / Pg. 45  
**EXP550Z** Men's Canvas Workwear Jacket 2 Colors / Pg. 47  
**EXP560V** Men's Canvas Workwear Vest 2 Colors / Pg. 48  
**EXP100PFZ** Men's Hyper-Loft Puffy Jacket 1 Color / Pg. 49



**EXP120PFV** Men's Hyper-Loft Puffy Vest 1 Color / Pg. 49  
**EXP200PFZ** Women's Hyper-Loft Puffy Jacket 1 Color / Pg. 50  
**EXP220PFV** Women's Hyper-Loft Puffy Vest 1 Color / Pg. 50  
**EXP95NB** Men's Heavyweight Windbreaker Jacket 5 Colors / Pg. 51  
**EXP99CNB** Men's Heavyweight Windbreaker Coaches Jacket 5 Colors / Pg. 52  
**EXP94NAW** Men's Water Resistant Windbreaker Anorak Jacket 5 Colors / Pg. 53  
**EXP35SSZ** Men's Poly-Tech Soft Shell Jacket 3 Colors / Pg. 55  
**EXP80PTZ** Men's Heavyweight Poly-Tech Zip Hood 1 Color / Pg. 56  
**EXP70PTZ** Unisex Heavyweight Poly-Tech Zip Track Jacket 5 Colors / Pg. 57

## STANDARD SUPPLY



**EXP60PAZ** Women's Lightweight Poly-Tech Zip 6 Colors / Pg. 58  
**EXP90SHZ** Unisex Heavyweight Sherpa Lined Heathered Zip Hood 5 Colors / Pg. 59  
**EXP40SHZ** Men's Heavyweight Sherpa Lined Zip Hood 1 Color / Pg. 60  
**SS4500** Men's Midweight Hooded Pullover 37 Colors / Pg. 63  
**SS4500Z** Men's Midweight Zip Hood 16 Colors / Pg. 65  
**SS3000** Men's Midweight Crew Neck 21 Colors / Pg. 67  
**SS1000** Unisex Lightweight Hoodback Terry Hooded Pullover 9 Colors / Pg. 69  
**SS1000Z** Unisex Lightweight Hoodback Terry Zip Hood 12 Colors / Pg. 71  
**SS1000C** Unisex Lightweight Hoodback Terry Crew 12 Colors / Pg. 73

## PREMIUM



**SS008** Women's Midweight Hooded Pullover 4 Colors / Pg. 75  
**SS650** Women's Lightweight Hooded Pullover 7 Colors / Pg. 77  
**SS650Z** Women's Lightweight Zip Hood 7 Colors / Pg. 79  
**SS240** Women's Lightweight Crew 6 Colors / Pg. 81  
**PRM4500** Unisex Heavyweight Pigment Dyed Hooded Pullover 17 Colors / Pg. 85  
**PRM3500** Unisex Midweight Pigment Dyed Crew Neck 17 Colors / Pg. 87  
**PRM50PTPD** Men's Pigment Dyed Fleece Pant 10 Colors / Pg. 89  
**PRM50STPD** Men's Pigment Dyed Fleece Short 10 Colors / Pg. 90  
**PRM2500** Women's California Wave Wash Hooded Pullover 9 Colors / Pg. 91



**PRM2500Z** Women's California Wave Wash Zip Hood 7 Colors / Pg. 93  
**PRM2000** Women's California Wave Wash Crew 7 Colors / Pg. 94  
**PRM20PNT** Women's California Wave Wash Fleece Pant 9 Colors / Pg. 95  
**PRM20SRT** Women's California Wave Wash Fleece Short 9 Colors / Pg. 97  
**PRM4500TD** Unisex Midweight Tie Dye Hooded Pullover 8 Colors / Pg. 99  
**PRM3500TD** Unisex Midweight Tie Dye Crew Neck 8 Colors / Pg. 100  
**PRM50PTD** Men's Tie Dye Fleece Pant 6 Colors / Pg. 101  
**PRM50STD** Men's Tie Dye Fleece Short 2 Colors / Pg. 102  
**PRM4500MW** Unisex Midweight Mineral Wash Hooded Pullover 1 Color / Pg. 103



**PRM50PTMW** Men's Mineral Wash Fleece Pant 1 Color / Pg. 104  
**PRM50STMW** Men's Mineral Wash Fleece Short 1 Color / Pg. 104  
**PRM90HT** Unisex Midweight French Terry Hood 10 Colors / Pg. 105  
**PRM90HTZ** Unisex Midweight French Terry Zip Hood 11 Colors / Pg. 106  
**PRM33SBP** Unisex Midweight Special Blend Raglan Hooded Pullover 15 Colors / Pg. 107  
**PRM33SBZ** Unisex Midweight Special Blend Raglan Zip Hood 14 Colors / Pg. 109  
**PRM30SBC** Unisex Midweight Special Blend Raglan Crew 14 Colors / Pg. 110  
**PRM65DRS** Women's Midweight Special Blend Hooded Pullover Dress 4 Colors / Pg. 111  
**INDBKTSB** Midweight Special Blend Blanket 9 Colors / Pg. 112

## JERSEY

## YOUTH



**SS150J** Men's Lightweight Jersey Hooded Pullover 5 Colors / Pg. 115  
**SS150JZ** Men's Lightweight Jersey Zip Hood 5 Colors / Pg. 116  
**PRM1500Y** Youth Midweight Pigment Dyed Hooded Pullover 9 Colors / Pg. 119  
**PRM1500TD** Youth Midweight Tie Dye Hooded Pullover 6 Colors / Pg. 120  
**SS4001Y** Youth Midweight Hooded Pullover 13 Colors / Pg. 121  
**SS4001YZ** Youth Midweight Zip Hood 10 Colors / Pg. 121  
**EXP24YWZ** Youth Lightweight Windbreaker Jacket 4 Colors / Pg. 122  
**PRM15YSB** Youth Lightweight Special Blend Raglan Hooded Pullover 10 Colors / Pg. 123  
**PRM15YSBZ** Youth Lightweight Special Blend Raglan Zip Hood 7 Colors / Pg. 124



**PRM10TSB** Toddler Lightweight Special Blend Raglan Hooded Pullover 10 Colors / Pg. 125  
**PRM10TSBZ** Toddler Lightweight Special Blend Raglan Zip Hood 7 Colors / Pg. 126  
**PRM16PNT** Youth Lightweight Special Blend Pant 3 Colors / Pg. 127  
**PRM11PNT** Toddler Lightweight Special Blend Pant 3 Colors / Pg. 127  
**PRM16SRT** Youth Lightweight Special Blend Short 3 Colors / Pg. 128  
**PRM11SRT** Toddler Lightweight Special Blend Short 3 Colors / Pg. 128



# COLOR SWATCH LIBRARY



## BASIC FLEECE >

BLACK PMS BLACK C	CHARCOAL HEATHER PMS 433 C	SOLID CHARCOAL PMS 431 C	GUNMETAL HEATHER PMS 424 C	SALT-N-PEPPER COOL GREY 9 C	GREY HEATHER PMS 429 C	SMOKE PMS 2330 C	WHITE
SLATE BLUE PMS 2965 C	CLASSIC NAVY PMS 5395 C	NAVY PMS 296 C	NAVY HEATHER PMS 296 C	CLASSIC NAVY HEATHER PMS 296 C	STORM BLUE PMS 4138 C	COBALT PMS 286 C	ROYAL PMS 287 C
ROYAL HEATHER PMS 294 C	TURQUOISE PMS 638 C	SKY HEATHER PMS 659 C	MISTY BLUE 17-4021 TCX	BLUE AQUA PMS 2905 C	LAVENDER PMS 2567 C	PLUM PMS 7653 C	PURPLE PMS 273 C
LT. BLACKBERRY PMS 262 C	BURGUNDY HEATHER PMS 1817 C	MAROON PMS 490 C	CURRENT PMS 195 C	CARDINAL PMS 209 C	BRICK RED PMS 201 C	RED PMS 200 C	RED HEATHER PMS 1955 C
DUSTY ROSE 17-1520 TCX	DUSTY PINK PMS 7605 C	BLUSH 13-1408 TCX	LIGHT PINK PMS 217 C	BURNT ORANGE HEATHER PMS 1605 C	ORANGE PMS 172 C	RUST PMS 180 C	PEACH PMS 148 C
GOLDEN WHEAT HEATHER PMS 465 C	GOLD 15-1058 TCX	LIGHT YELLOW PMS 461 C	MINT PMS 318 C	DUSTY SAGE PMS 4183 C	KELLY GREEN PMS 348 C	KELLY GREEN HEATHER PMS 3415 C	DARK GREEN PMS 3435 C
FOREST GREEN PMS 560 C	ALPINE GREEN PMS 567 C	OLIVE PMS 4226 C	OLIVE HEATHER PMS 4224 C	ARMY PMS 4228 C	ARMY HEATHER PMS 5747 C	BROWN PMS 7596 C	SADDLE PMS 2319 C
SANDSTONE PMS 7504 C	CEMENT WARM GREY 5 C	BONE 11-0604 TCX	OATMEAL HEATHER PMS 7527 C	OATMEAL HTHR / SALT & PEPPER PMS 7527 C & COOL GREY 9 C	SAFETY YELLOW 13-0443 TCX	SAFETY ORANGE 16-1364 TCX	NEON PINK 17-2033 TCX

## BASIC FLEECE (CONTINUED) >

NATURAL SHERPA PMS 468 C	HOUNDSTOOTH	FOREST CAMO	BLACK CAMO	ARMY CAMO	SNOW CAMO	TIGER CAMO

## LOOPBACK TERRY >

BLACK PMS BLACK C	CHARCOAL HEATHER PMS 433 C	ATHLETIC HEATHER PMS 429 C	WHITE	INDIGO 19-4028 TCX	PORT 18-1420 TCX	OLIVE 17-0613 TCX	HARVEST GOLD 14-1036 TCX
SAND 14-1106 TCX	BONE 11-0107 TCX	MISTY BLUE 17-4021 TCX	ROSE 14-1506 TCX				

## CALIFORNIA WAVE WASH >

BLACK PMS BLACK C	SHADOW 18-5204 TCX	SAGE 16-5304 TCX	MISTY BLUE 17-4021 TCX	DUSTY ROSE 17-1520 TCX	BLUSH 13-1408 TCX	BONE 11-0105 TCX	FOREST CAMO HEATHER
BLACK CAMO HEATHER							

## SPECIAL BLEND >

BLACK PMS BLACK C	CARBON HEATHER PMS 433 C	NICKEL HEATHER PMS 424 C	MIDNIGHT HEATHER PMS 534 C	CLASSIC NAVY PMS 5395 C	MAROON PMS 490 C	CRIMSON HEATHER PMS 209 C	MOSS HEATHER PMS 3305 C
PACIFIC HEATHER PMS 278 C	POMEGRANATE HTHR PMS 703 C	SEA GREEN HTHR PMS 563 C	STONE HEATHER 14-4002 TCX	FOREST CAMO HEATHER	RED BUFFALO PLAID		

## TIE DYE >

TIE DYE BLACK	TIE DYE NAVY	TIE DYE AQUA BLUE	TIE DYE PINK	TIE DYE DUSTY PINK	TIE DYE OLIVE	TIE DYE COTTON CANDY	TIE DYE SUNSET SWIRL





**PIGMENT DYE >**



PIGMENT BLACK PMS BLACK 7 C    PIGMENT MAROON PMS 4985 C    PIGMENT SLATE BLUE PMS 647 C    PIGMENT ALPINE GREEN PMS 5545 C    PIGMENT SANDSTONE PMS 7503 C    PIGMENT LIGHT BLUE PMS 7453 C    PIGMENT MINT PMS 563 C    PIGMENT PINK PMS 190 C



PIGMENT YELLOW PMS 1205 C    PIGMENT AMBER PMS 1675 C    PIGMENT PLUM PMS 4284 C    PIGMENT CLAY PMS 2328 C    PIGMENT CEMENT PMS 4270 C    PIGMENT SAGE PMS 5517 C    PIGMENT DUSTY PINK PMS 7605 C    PIGMENT IVORY PMS 4240 C

**MINERAL WASH >**



MINERAL WASH BLACK

**WATER RESISTANT SOFT SHELL >**



BLACK PMS BLACK C    GRAPHITE PMS 432 C    CLASSIC NAVY PMS 5395 C

**WATER RESISTANT POLY-TECH >**



BLACK PMS BLACK C    GUNMETAL HEATHER PMS 424 C    WHITE    CLASSIC NAVY PMS 5395 C    BRICK RED PMS 201 C    ASTER BLUE PMS 300 C    LAPIS GREEN PMS 326 C    CORAL PMS 191 C

**LIGHTWEIGHT WINDBREAKER >**



SMOKE COOL GREY 1 C    GRAPHITE PMS 432 C    BLACK PMS BLACK C    CLASSIC NAVY PMS 5395 C    ROYAL PMS 287 C    MAROON PMS 490 C    RED PMS 200 C    ARMY PMS 5743 C



SADDLE PMS 2319 C    CLASSIC KHAKI 13-0607 TPX    AQUA PMS 550 C    BLUSH PMS 196 C    SAFETY YELLOW 13-0443 TCX    SAFETY ORANGE 16-1364 TCX    FOREST CAMO    BLACK CAMO



WHITE CAMO

**WATER RESISTANT NYLON >**



BLACK PMS BLACK C    GRAPHITE PMS 432 C    CLASSIC NAVY PMS 5395 C    CLASSIC KHAKI 13-0607 TPX    FOREST CAMO    BLACK CAMO

**WATERPROOF POLYESTER >**



BLACK PMS BLACK C    BLACK / CHECKER STRAP    POLKA DOT    CHEETAH    BLACK CHEETAH    SOUTHWEST    TIGER CAMO    FOREST CAMO



BLACK CAMO    WHITE CAMO

**FLANNEL >**



CHAR. HTHR / BLACK PMS 433 C    GREY HTHR / BLACK PMS 433 C    OLIVE / BLACK PMS 4218 C    RED / BLACK PMS 207 C

**CANVAS WORKWEAR >**



BLACK PMS BLACK C    SADDLE PMS 2319 C





## HEADQUARTERS

1 1341 Calle Avanzado  
San Clemente, CA 92673

toll free: 877.366.9911  
phone: 949.366.9911  
fax: 949.366.5488  
info@independenttradingco.com

## SOCIAL MEDIA

- @independenttradingcompany
- /IndependentTradingCompany
- @indytradingco
- Independent Trading Company

## DISTRIBUTION CENTERS

WEST COAST 2 4150 North Palm St.  
Fullerton, CA 92835

EAST COAST 3 1511 N. Park Drive  
Hazle Township, PA 18202



## U.S. DISTRIBUTORS

### S&S ACTIVEWEAR



Nevada, Florida, Georgia, Illinois,  
Kansas, Ohio, New Jersey, Texas  
toll free: 800.523.2155  
phone: 630.679.9940  
fax: 630.679.9941  
ssactivewear.com

### MISSION IMPRINTABLES



California  
San Diego, Ca.  
phone: 800.480.0800  
missionimprintables.com

### SUN APPAREL



California, Hawaii, Kentucky,  
Nevada  
phone: 877.478.6364  
www.sun-apparel.com

### SLC ACTIVEWEAR



Utah  
phone: 888.557.0799  
www.slicactivewear.com

## INTERNATIONAL DISTRIBUTORS

### AUSTRALIA



CHAPTER 2  
DISTRIBUTION  
phone: (07) 3890 7430  
www.chapter2dist.com

### BRAZIL



BLANKS CO.  
cep: 04552-100  
55 001 2679 8090  
Contato@Blankco.com.br  
www.blankco.com.br

### CANADA



PRIVATE AGENT DND  
phone: 450.356.3440  
info@privateagentdnd.com  
www.privateagentdnd.com

### CANADA



S&S CANADA  
phone: (800) 711-1600  
en-ca.ssactivewear.com

### EUROPE



L-SHOP-TEAM GmbH  
info@l-shop-team.de  
www.l-shop-team.eu

### JAPAN



VIA TRANSPORTS  
phone: 03 3792 4116  
sales@anytees.com  
www.1.anytees.com

### MEXICO



DIMEO CLOTHING  
COMPANY  
phone: 01(800) 822-2285 01  
(33) 3628 8825 /  
3628 8866 / 3634 8035 /  
3634 9646  
direccion@dimeo.mx  
www.dimeo.mx

### UNITED KINGDOM



BUFFALO TRADING  
phone: 020-8998-5978  
contact@buffalotrading.co.uk  
www.buffalotrading.co.uk







INDEPENDENT TRADING COMPANY  
Quality Sweatshirts.  
2023